



# Sketchify Tutorial

## Getting Started – Creating a New Project

[sketchify.sf.net](http://sketchify.sf.net)

Željko Obrenović

[z.obrenovic@tue.nl](mailto:z.obrenovic@tue.nl)



# Agenda

- Main Sketchify Window
- Creating a New Project
- Sketchify Editor
- Modes of Working



# Main Sketchify Window

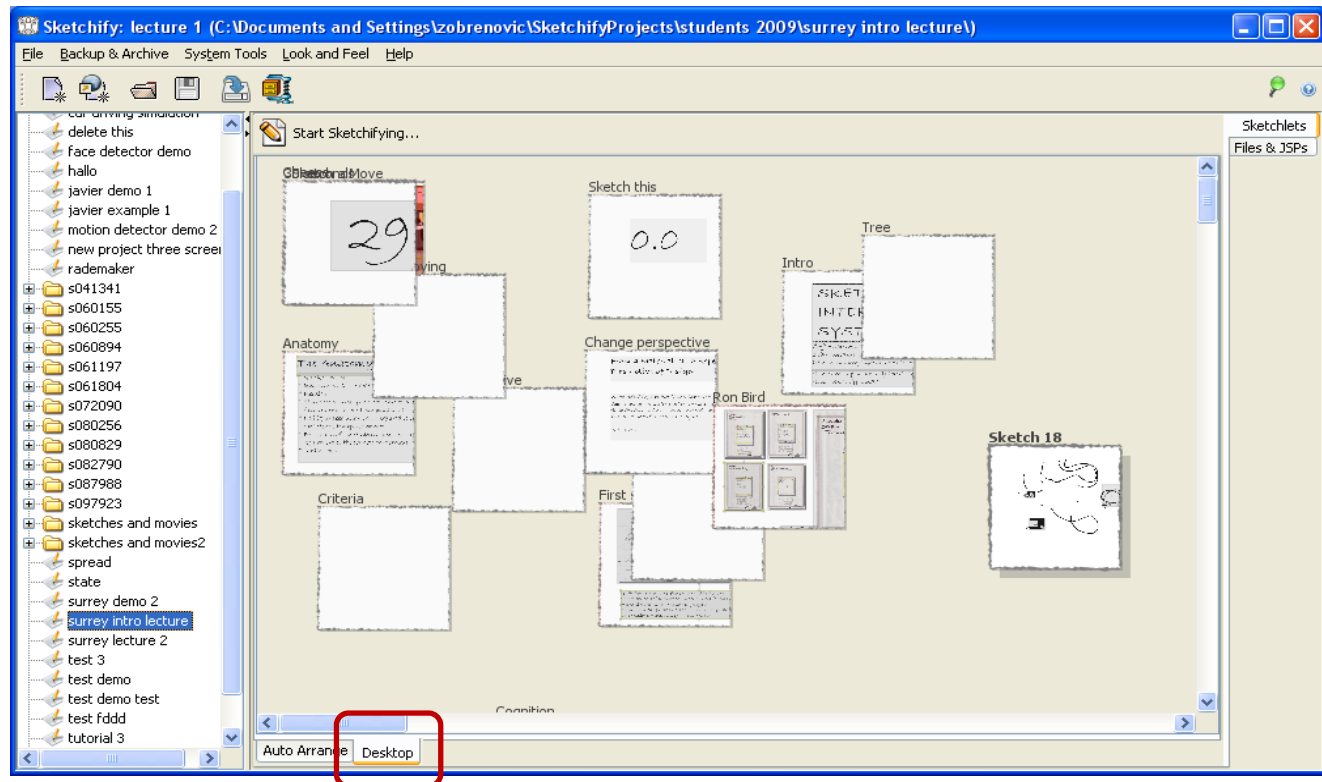
Create new project    Open project from URL    Save project    Backup project to remote location    Achieve project in a ZIP file    Sketches in the current project

The screenshot shows the Sketchify application window titled "Sketchify: lecture 1 (C:\Documents and Settings\zobrenovic\SketchifyProjects\students\_2009\surrey intro lecture\)". The window has a menu bar with "File", "Backup & Archive", "System Tools", "Look and Feel", and "Help". Below the menu bar is a toolbar with icons for creating a new project, opening a project from a URL, saving a project, backing up a project to a remote location, and achieving a project in a ZIP file. On the left side, there is a "Project navigator" showing a list of folders and files, with "surrey intro lecture" selected. The main area displays a grid of sketches, including "Intro", "First sketch", "Quintessential", "Sketch this", "Change perspective", "Ron Bird", "Safety first", "Wrist Computer", "Sketch a Move", "Anatomy", "Cheese", "Cognition", "Interactive", "Prototyping", "Criteria", "Tree", "30 seconds", and "Sketch 18". On the right side, there is a "Sketchlets" panel with "Files & JSPs" selected. At the bottom, there are "Auto Arrange" and "Desktop" buttons.



# Main Sketchify Window – Desktop Tab

- In desktop tab, you can manually arrange the sketches on the “desktop”





# Creating a New Project

Sketchify: halo (C:\Documents and Settings\zobrenovic\SketchifyProjects\students 2009\halo\)

File Backup & Archive System Tools Look and Feel Help

Start Sketchifying...

Sketch 1

Sketchlets  
Files & JSPs

**New Project**

Project name:

Template:

Project location:

Project folder:

Unique project name

Location where the project folder will be created (default is <USER\_DIR>/SketchifyProjects)

Project folder. For each project, a news folder is created (with the name of the project).



# Sketchify Editor

Playback (in a separate window)

Settings of playback windows

Save

New sketch

Show/hide variables panel on the right

Drawing mode

Active regions mode

Quick preview mode

Main sketching area

Variable Name	Value	Descr
---------------	-------	-------

Sketchlets I/O Services Timers Macros ...

- drag
- Sketch 1
- Sketch 2

Table Thumbnails

Active regions mode; x=334, y=299



# Editor Modes

- **Drawing Mode**
  - Draw on the background bitmap image of the sketchlet. You can use simple standard options to create simple images, import a file from the file, or open it in the external editor for complex processing.
- **Active Regions Mode**
  - Working with regions in the sketchlets
- **Quick Preview Mode**
  - quickly execute and test your sketchelts
- **Annotation Mode**
  - Drawing annotation on top of the background image and regions. You can use all drawing commands as in the drawing mode.

